



## September 2009 Newsletter

### Back By Popular Demand – The Commute Seattle Trip Planner!

You asked a  
nd we listened.

The Commute Seattle Trip Planner is now back on the front page of the CS website to help you find real time bus and transit information right from our site. You can search directly for King County Metro or Sound Transit

bus information as well as find links to other trip planning tools. Thank you to all of you who wrote or called to let us know how much you loved the feature!

Did you know: you can use the Commute Seattle Trip Planner tool directly from any handheld device?

Visit [www.commuteseattle.com](http://www.commuteseattle.com) and you'll find the planner at the bottom of your blackberry or I-Phone browser!

### PARK(ing) Day is Friday, September 18

Parking Day is an international event hosted by Feet First in Seattle. This year they are hosting over 30 mini parks. Find the [park closest to you](#).

PARK(ing) Day began in 2005 when Rebar, a San Francisco art collective, converted a single metered parking space into a temporary public park in an area of San Francisco that is underserved by public open space. The idea of the event is to hire a parking space and turn it into a mini park rather than using it to park your car. The event aims to get people thinking about the use of urban space, the dominance of the car in our society and other travel options such as biking, walking and taking transit.

For more information, contact Feet First by emailing [info@feetfirst.info](mailto:info@feetfirst.info), calling 206-652.2310, or visiting [www.parkingday.org](http://www.parkingday.org).



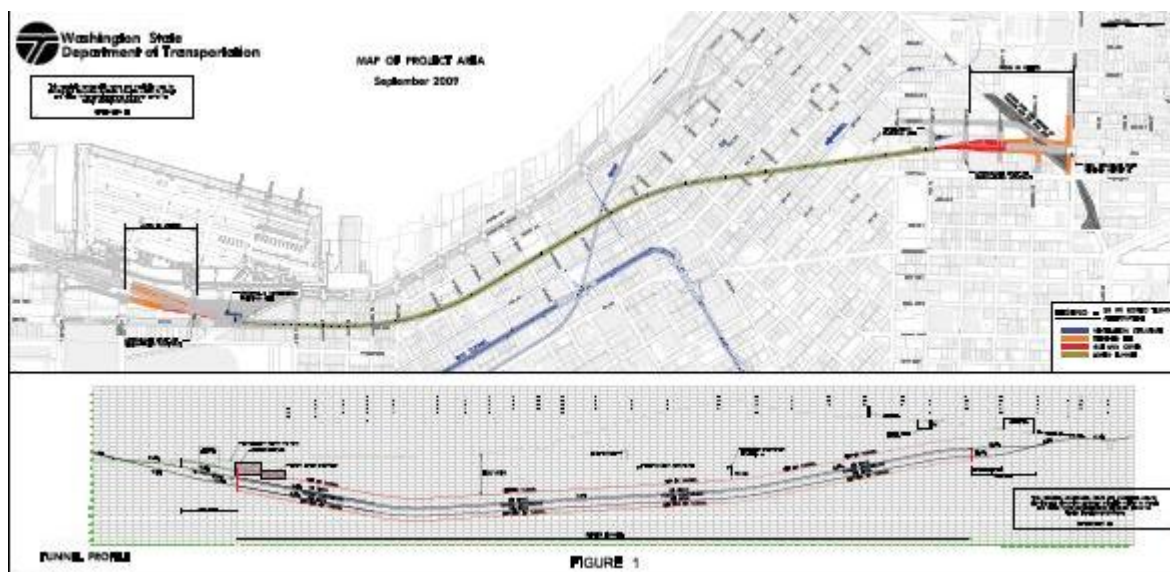
## What's HOT at SDOT

The City of Seattle's Department of Transportation has a TON of great resources to help the commuter get around. Check them out at: [www.cityofseattle.net/transportation](http://www.cityofseattle.net/transportation). They're also on twitter ([twitter.com/seattledot/](http://twitter.com/seattledot/)), have RSS feeds related to your specific interests or geographic area, and post frequent commuting and traffic advisories at <http://onthemove.seattle.gov/>.

## WSDOT Takes Another Step Towards Replacing the Alaskan Way Viaduct

WSDOT recently issues a request for qualifications to contractors interested in building the proposed SR 99 bored tunnel to replace the Alaskan Way Viaduct. The agency plans to announce in January a short-list of three to four most qualified design-build teams to submit proposals. The successful team will be selected at the end of 2010.

To see a close-up map of the project design below, click [here](#):



## Second Avenue Paving Nears Completion

If you've been anywhere near Second Avenue this summer you've probably noticed the huge repaving project all along Second from Denny to Washington St. WSDOT crews have been grinding, repairing, and paving the routes and will soon be nearing completion.

Concrete repairs are now complete on Second Avenue between Pike Street and Yesler Way. SDOT contractors are reconstructing the Second Avenue extensions over the next few weeks, so be prepared for closures on Third Avenue, Main Street and Washington until the end of the month. Bikers and Pedestrians – be especially careful moving through repaving areas as discrepancies in the roadway and debris can be difficult to maneuver.

## Washington State Transportation Commission Approves Ferry Fare Increase

The Washington State Transportation Commission voted to approve a 2.5 percent increase in Washington

State Ferry fares at its formal public hearing earlier this week in Seattle. The across-the-board fare increase, the first in two years.

New fares and policies go into effect Oct. 11, 2009. With the increase, the central Puget Sound passenger fare will rise from \$6.70 to \$6.90; the car and driver rate will go from \$11.55 to \$11.85. The entire fare proposal can be found [here](#) on the Commission's Web site.

---

### **Reminder: King County Metro Employer Incentives**

Tele-work programs require work place assessments and thoughtful information technology protocols. If your company is interested in implementing a tele-work policy, Commute Seattle can help you receive a free consultation from a national expert compliments of King County Metro. Contact [info@commuteseattle.com](mailto:info@commuteseattle.com) for more information.

---

[CommuteSeattle.com](http://CommuteSeattle.com): Your Online Resource for Commuting to Downtown. When it comes to commuting to downtown, you have options. Our website provides links to transportation providers and commuter resources all in one place. Make it your central resource for tracking your bus and getting the heads up on traffic alerts and weather as they relate to your commute. Employers will also find resources that will assist in making smart business decisions regarding employee commuter benefits.